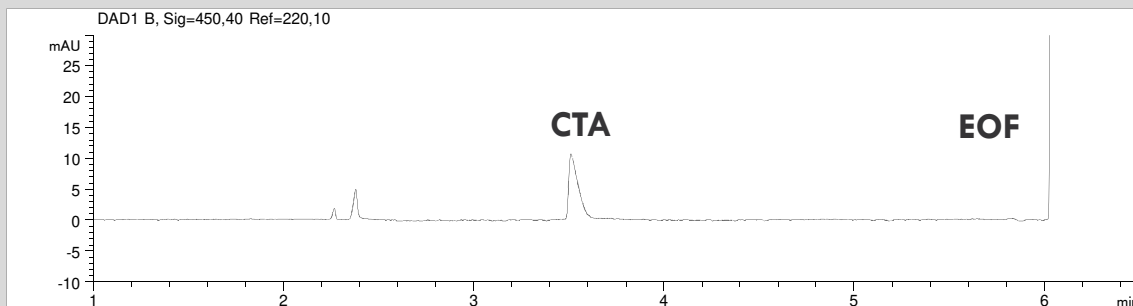
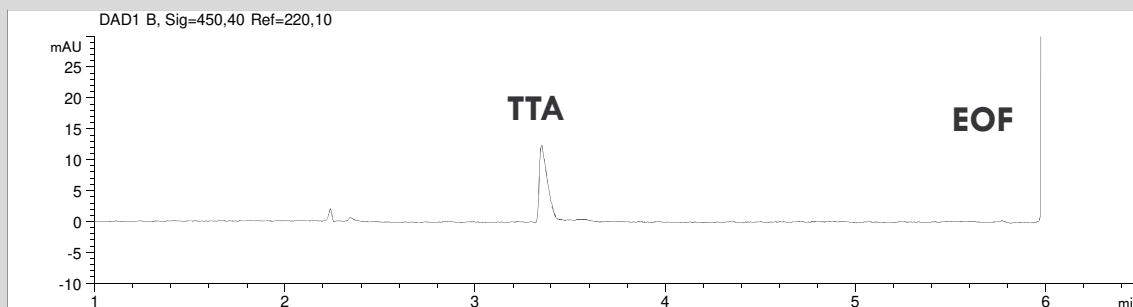
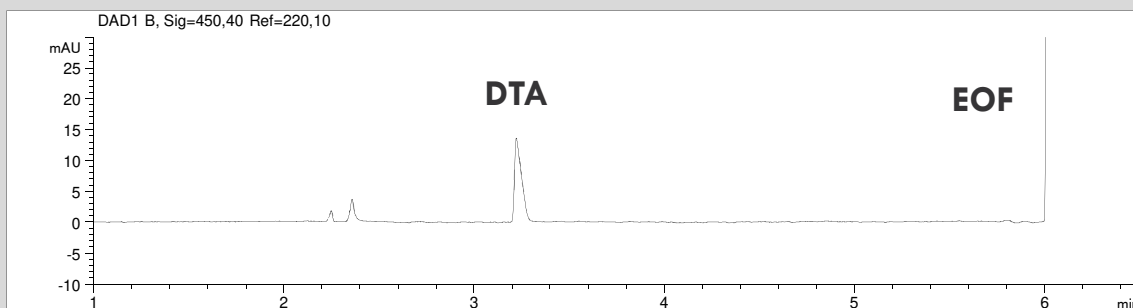


Determination of DTA, TTA and CTA



- Mode: CZE
- Samples:
 - DTA (Dodecyltrimethylammonium cation),
 - TTA (Tetradecyltrimethylammonium cation)
 - and CTA (Cetyltrimethylammonium cation),
 - 50 mg/l each
- Electrolyte: ABI
- Capillary: 50 μm ID, 48 cm total
- Separation: +30 kV, 25°C
- Injection: hydrodynamic, 50 mbar, 20 s
- Detection: indirect UV, 220 nm