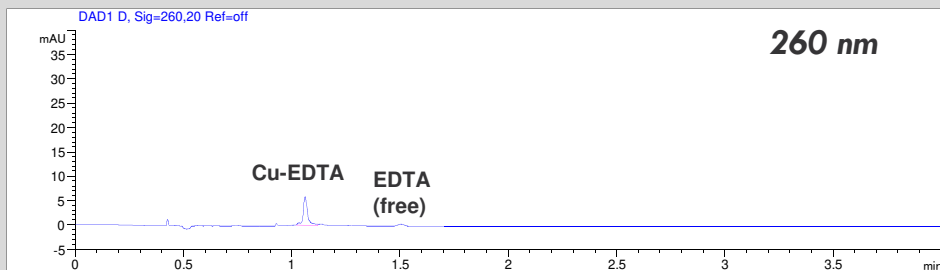
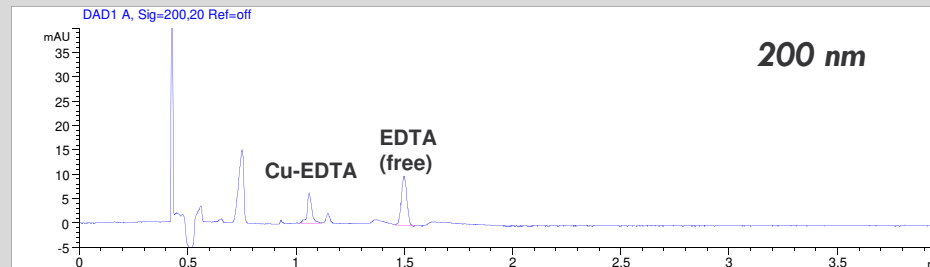


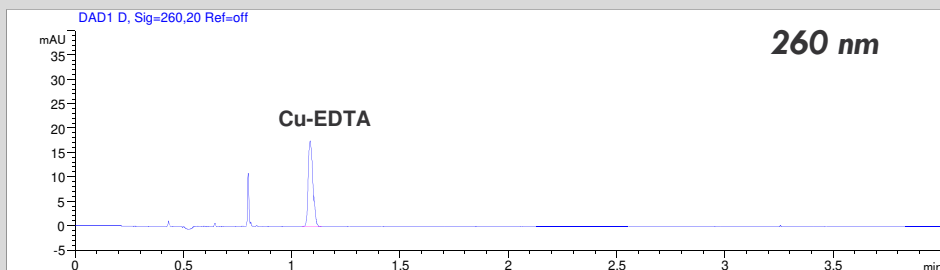
Determination of EDTA in nose drops



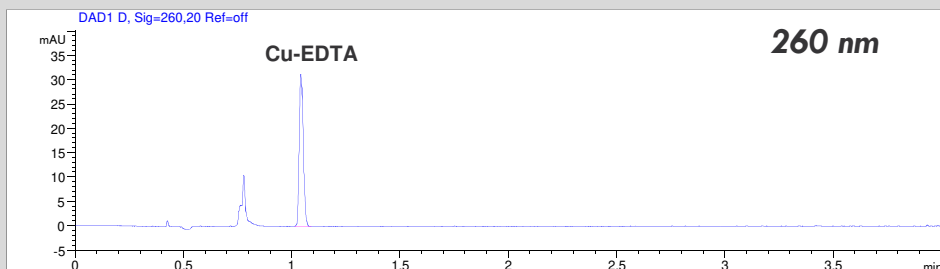
Nose drops, dilution 1:10, at 260 nm



Nose drops, dilution 1:10, at 200 nm



Nose drops, dilution 1:10, addition of Copper sulfate



Nose drops, dilution 1:10, addition of Copper sulfate and EDTA



- Mode: CZE
- Electrolyte: Borate
- Capillary: 50 µm ID, 48 cm total, bubble cell
- Separation: -30 kV, 25°C
- Injection: hydrodynamic
- Detection: direct UV, 200 nm and 260 nm