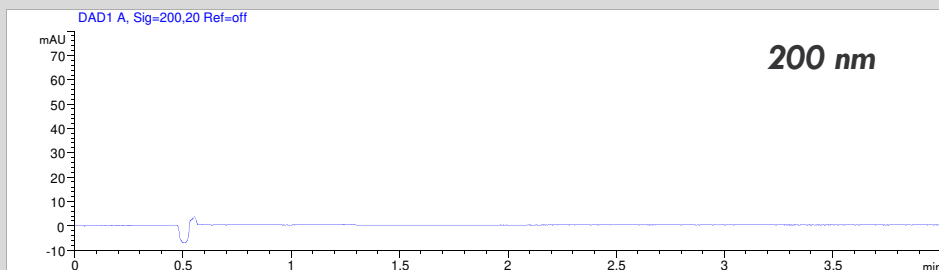
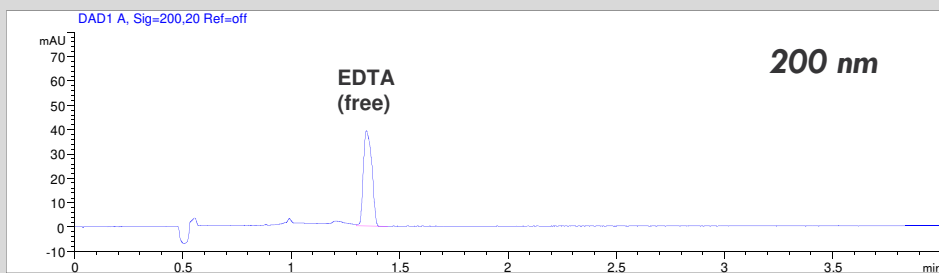


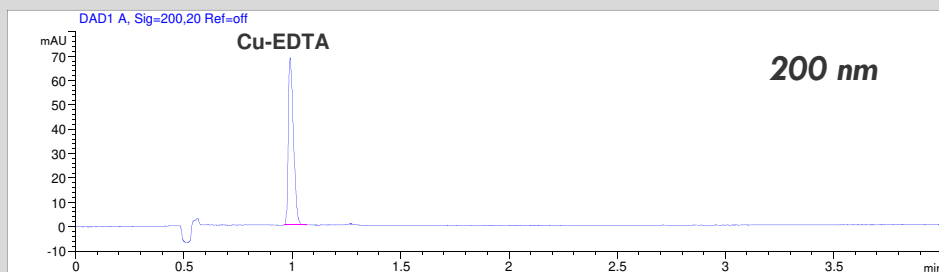
Determination of EDTA as free EDTA or as complexed EDTA



Blank: pure water



Standard solution: 100 mg/l EDTA



Standard solution: 100 mg/l Cu-EDTA

- Mode: CZE
- Electrolyte: Borate
- Capillary: 50 μm ID, 48 cm total, bubble cell
- Separation: -30 kV, 25°C
- Injection: hydrodynamic
- Detection: direct UV, 200 nm and 260 nm

The free EDTA can be detected at 200 nm.
For quantitation a quadratic regression is necessary.

The complex of Cu-EDTA can be detected at 200 nm or at 260 nm.
For quantitation a common linear regression is possible.