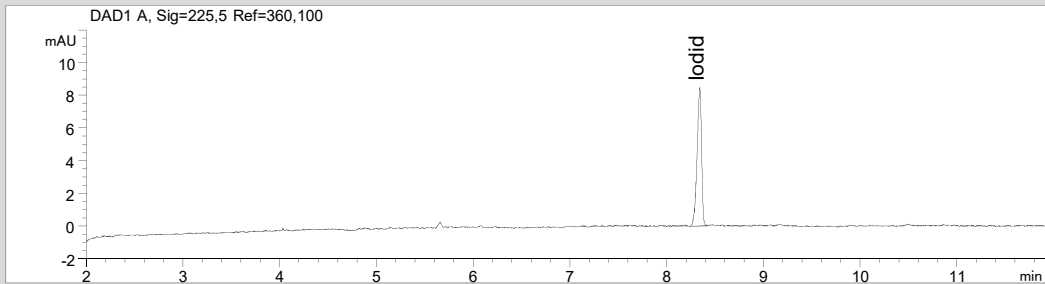
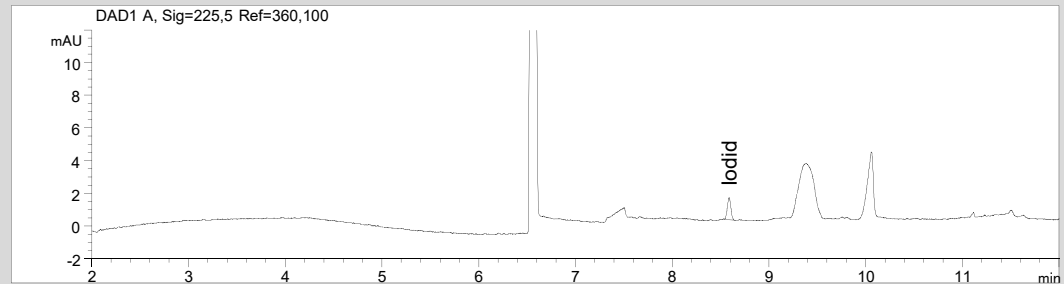


Iodid in Urin

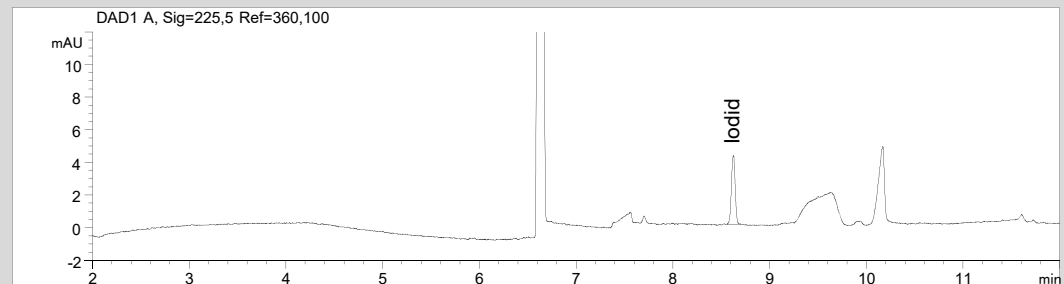


Standard: 1 mg/l Iodid

- Trenntechnik: CZE
- Elektrolyt: Borat, mit Modifizier
- Kapillare: fused silica, 50 µm ID, Bubble Cell, 64 cm gesamt
- Detektion: direkte UV, 225 nm



Urinprobe mit Iodidaddition, Level 1



Urinprobe mit Iodidaddition, Level 2