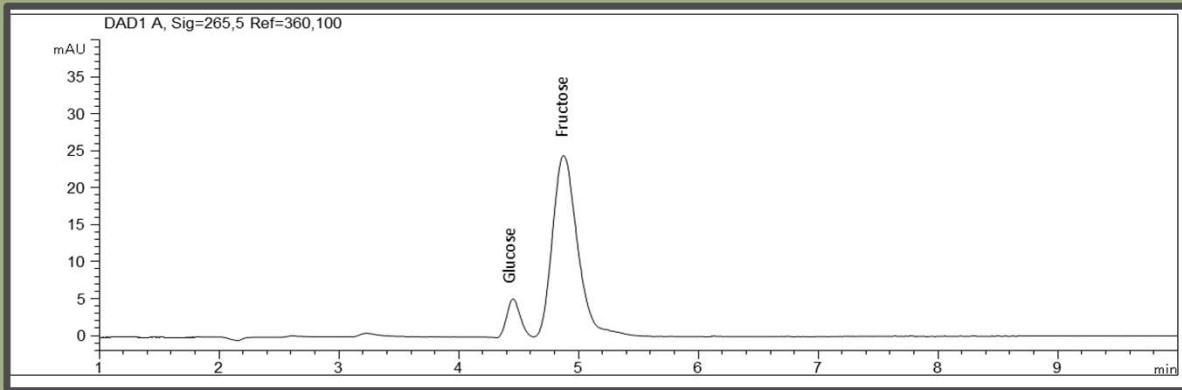


Säfte

Screening: Glucose und Fructose in Säften



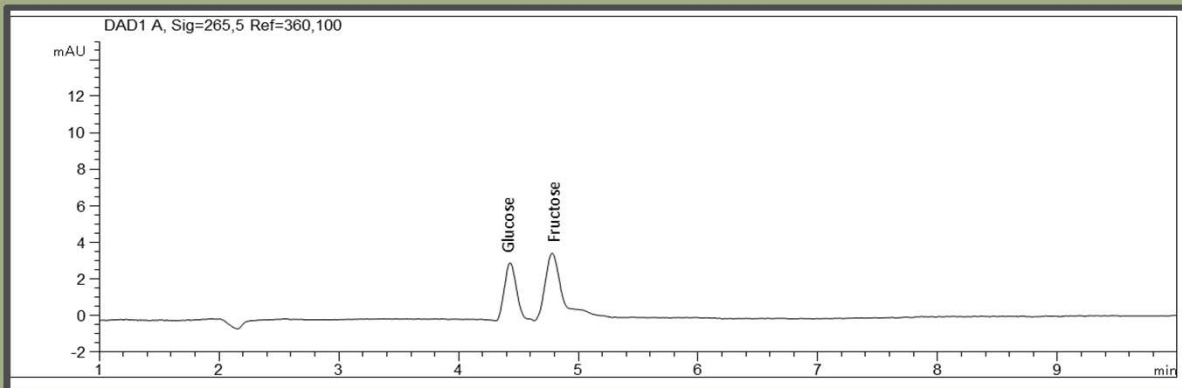
Trenntechnik: CZE

Elektrolyt: Phosphat, pH 12,6

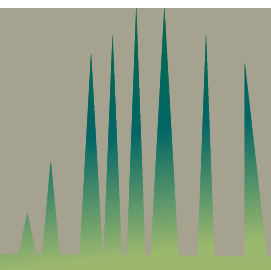
Kapillare: fused silica, 50 μ m ID, Bubble Cell, 64 cm gesamt

Detektion: direkte UV, 265 nm

Zuckerbestimmung in Apfelsaft

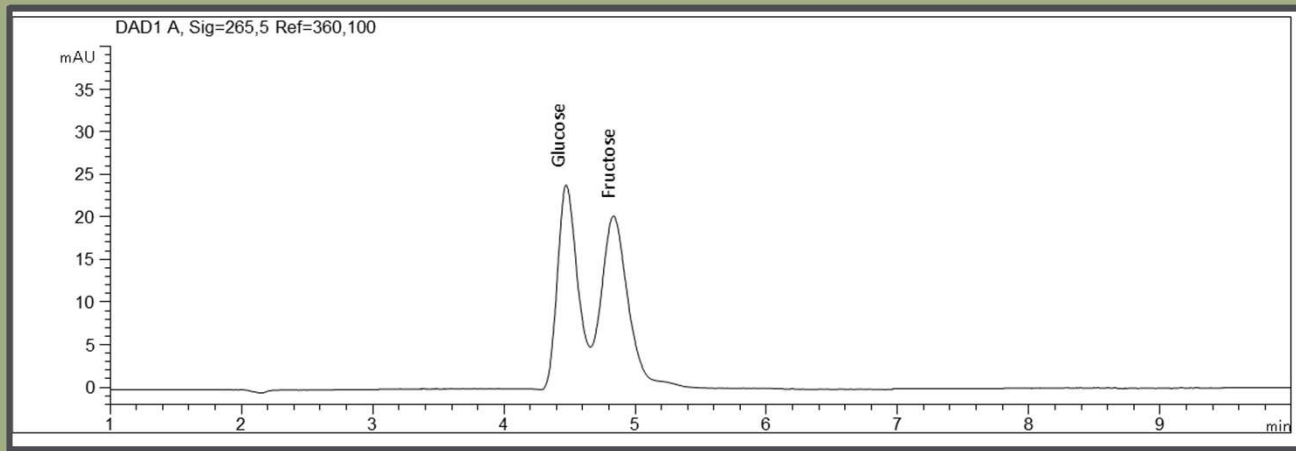


Zuckerbestimmung in Traubensaft



Cola

Screening: Glucose und Fructose in Cola



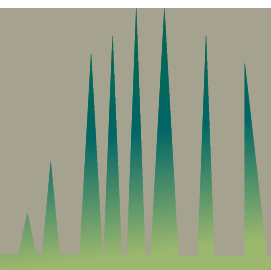
Trenntechnik: CZE

Elektrolyt: Phosphat, pH 12,6

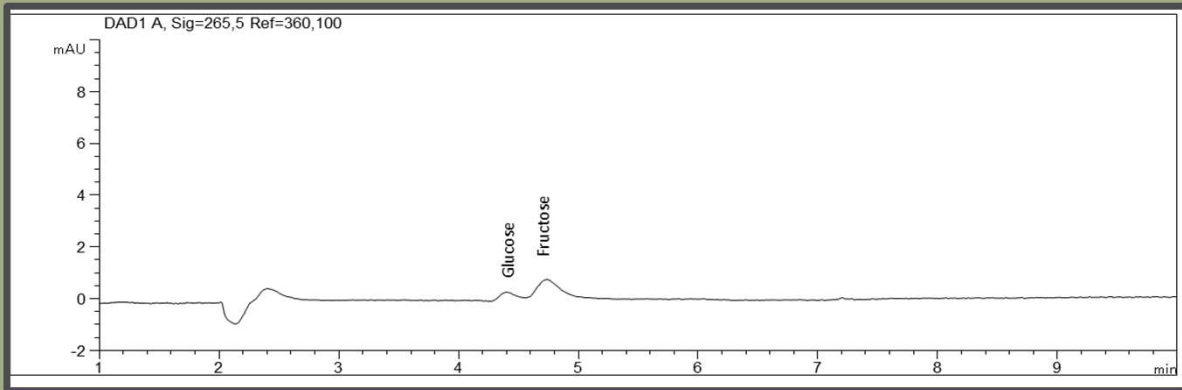
Kapillare: fused silica, 50 μm ID, Bubble Cell, 64 cm gesamt

Detektion: direkte UV, 265 nm

Zuckerbestimmung in Cola



Prosecco Screening: Glucose und Fructose in Prosecco



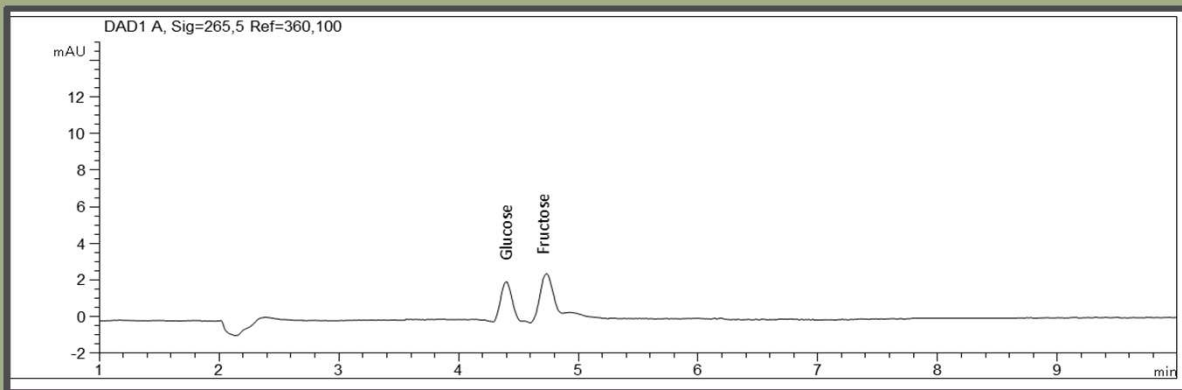
Trenntechnik: CZE

Elektrolyt: Phosphat, pH 12,6

Kapillare: fused silica, 50 μ m ID, Bubble Cell, 64 cm gesamt

Detektion: direkte UV, 265 nm

Zuckerbestimmung in Prosecco



Zuckerbestimmung in Prosecco Cassis