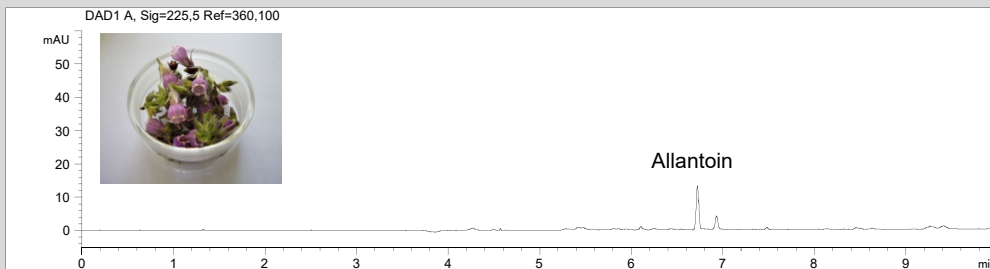
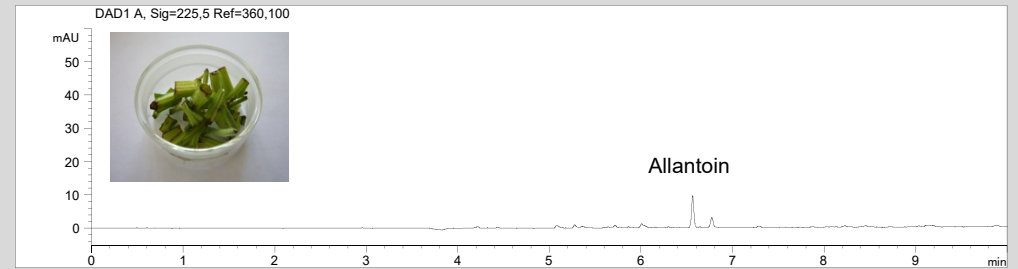


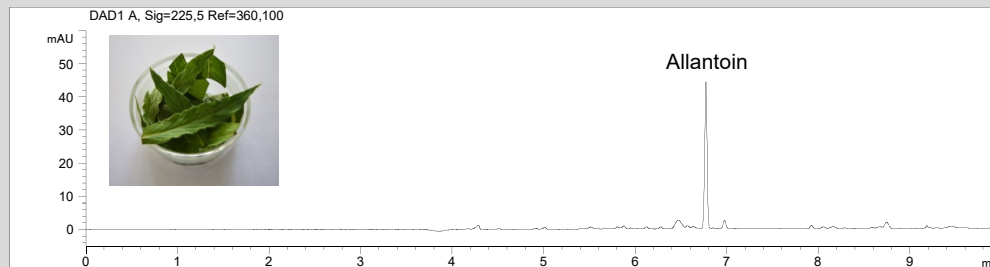
Allantoin in Beinwell



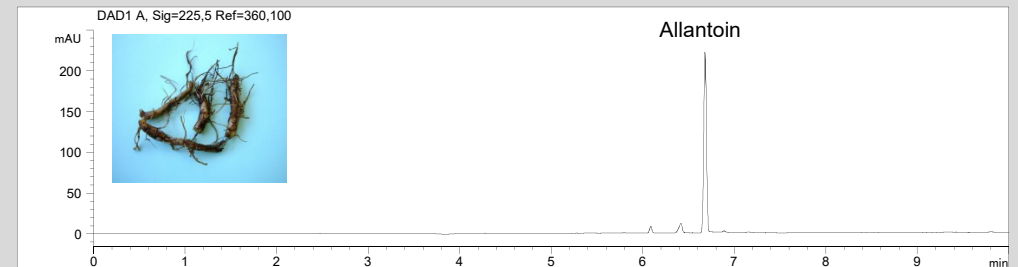
Allantoin in den Blüten der Beinwell-Pflanze



Allantoin in den Stielen der Beinwell-Pflanze



Allantoin in den Blättern der Beinwell-Pflanze



Allantoin in den Wurzeln der Beinwell-Pflanze

- Trenntechnik: MEKC
- Elektrolyt: Borat, SDS, pH 9,3
- Kapillare: fused silica, 50 µm ID, Bubble Cell, 64 cm gesamt
- Detektion: direkte UV, 225 nm