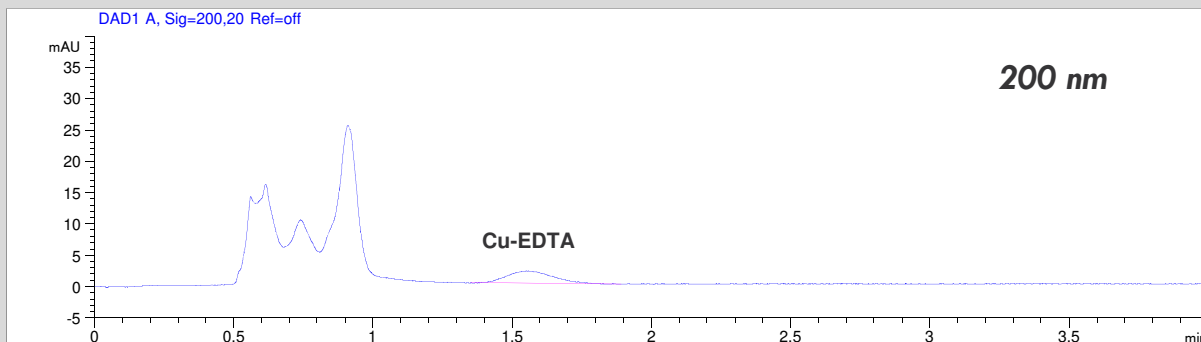
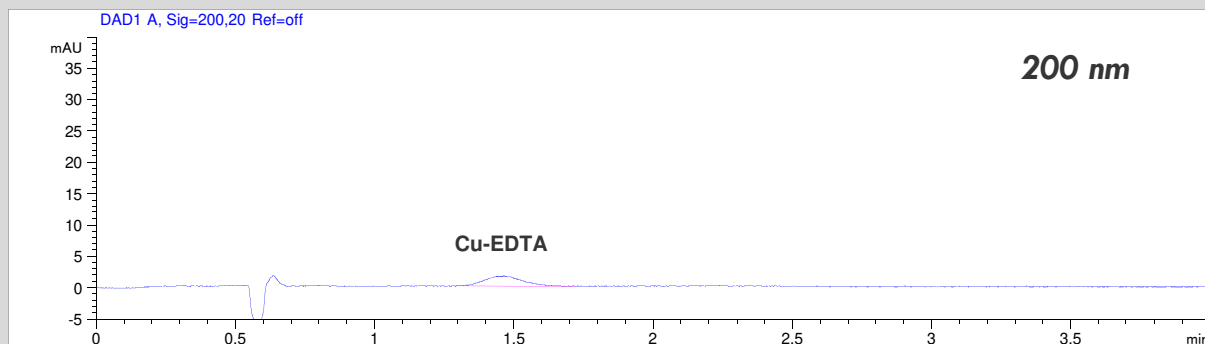


Determination of EDTA in Hair Conditioner



Hair conditioner, dilution 1:10, addition of Copper sulfate



Standard solution: 10 mg/l EDTA and Copper sulfate

- Mode: CZE
- Electrolyte: Borate
- Capillary: 50 μ m ID, 48 cm total, bubble cell
- Separation: -30 kV, 25°C
- Injection: hydrodynamic
- Detection: direct UV, 200 nm and 260 nm