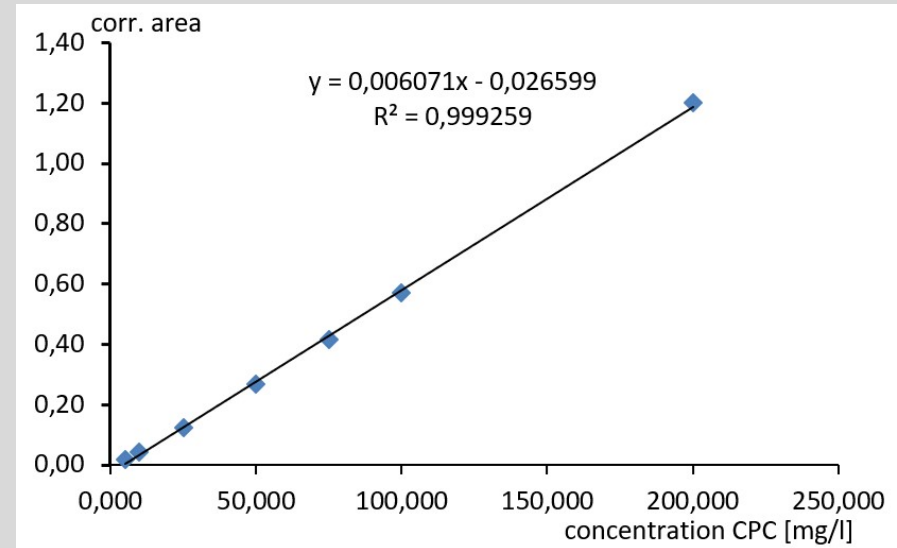
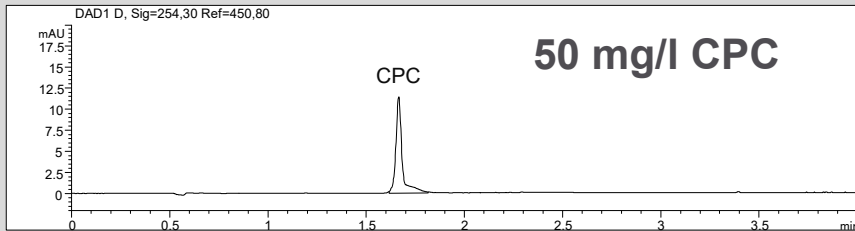
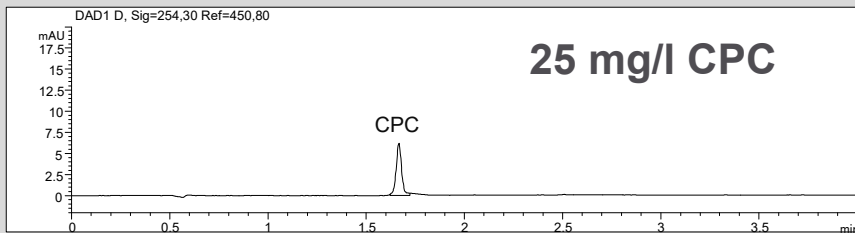
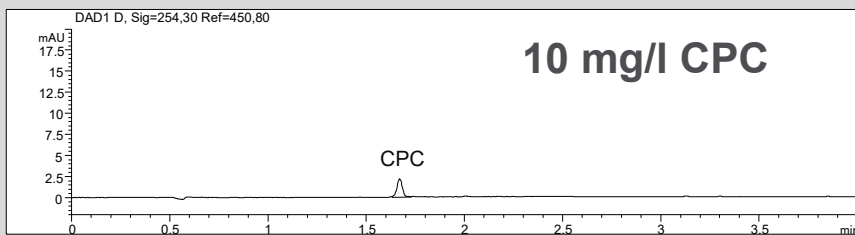
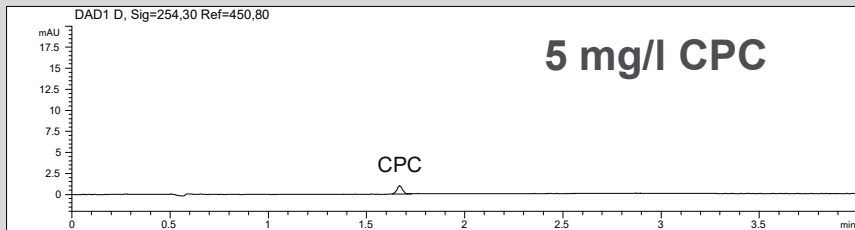


Calibration data of Cetylpyridinium chloride (CPC)



Linearity of CPC from 1 mg/l to 200 mg/l

- **Mode:** MEKC, short end
- **Electrolyte:** Borate, SDS
- **Capillary:** 50 μ m ID, 56 cm, bubble cell
- **Separation:** 30 kV, 25°C
- **Injection:** hydrodynamic
- **Detection:** direct UV, 254 nm