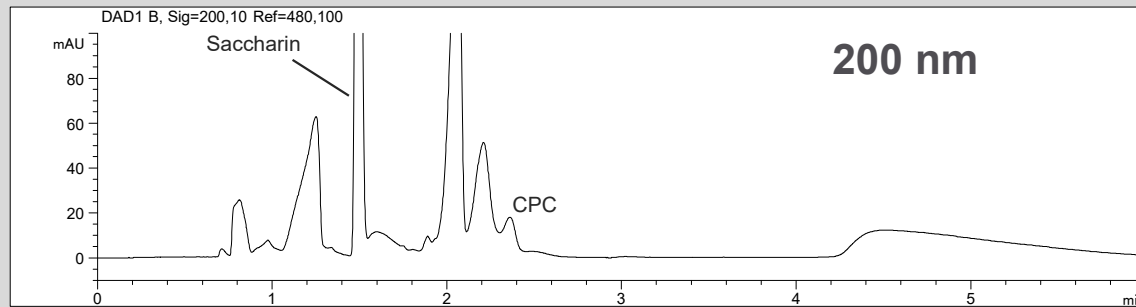
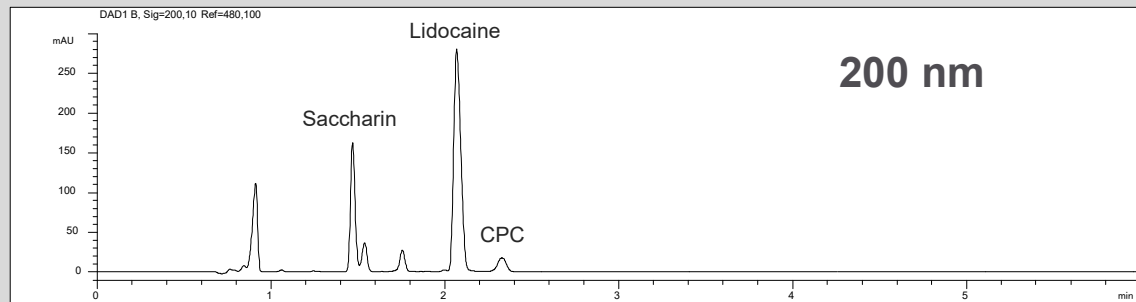


Cetylpyridinium chloride (CPC) in Mouth sprays



Mouth spray 1 at 200 nm; dilution 1:5



Mouth spray 2 at 200 nm; dilution 1:20

- Mode: MEKC, short end
- Electrolyte: Borate, SDS
- Capillary: 50 μm ID, 56 cm, bubble cell
- Separation: 30 kV, 25°C
- Injection: hydrodynamic
- Detection: direct UV, 200 nm