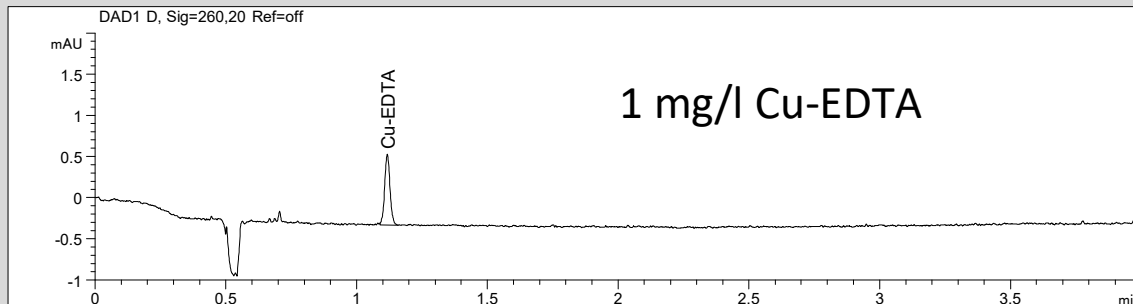
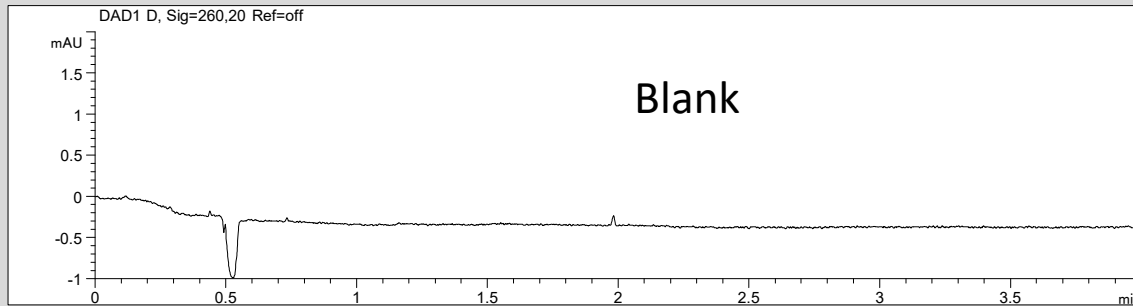


## Determination of Cu-EDTA: LOD



- Mode: CZE
- Electrolyte: Borate
- Capillary: 50  $\mu\text{m}$  ID, 48 cm total, bubble cell
- Separation: -30 kV, 25°C
- Injection: hydrodynamic
- Detection: direct UV, 260 nm

**Limit of detection (LOD): 60  $\mu\text{g/l}$  Cu-EDTA, (S/N = 3)**

**Reference: guideline: ICH Q2 (R1), 2005**