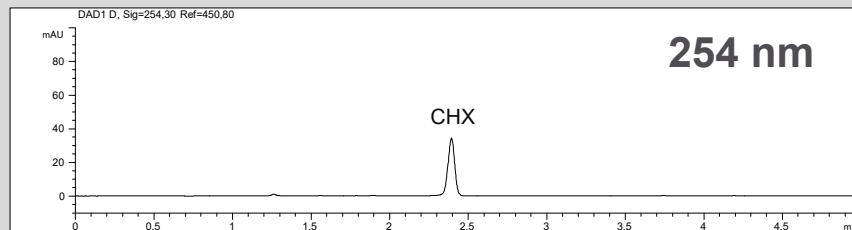
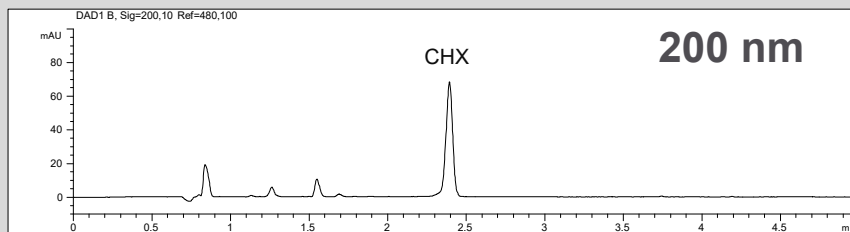


Chlorhexidine in gargling solution and mouth rinsing solution

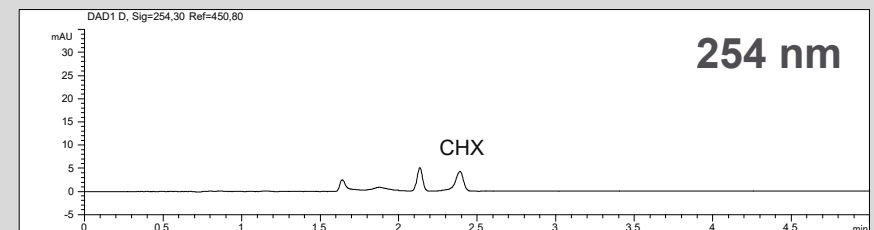
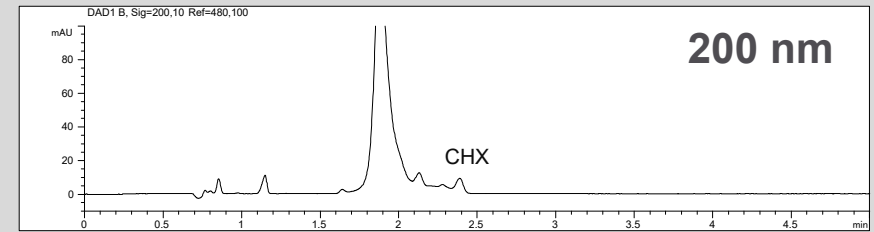


Gargling solution at 200 nm and 254 nm; dilution 1:20



- **Mode:** MEKC, short end
- **Electrolyte:** Borate, SDS
- **Capillary:** 50 μm ID, 56 cm, bubble cell

Mouth rinsing solution at 200 nm and 254 nm; dilution 1:20



- **Separation:** 30 kV, 25°C
- **Injection:** hydrodynamic
- **Detection:** direct UV, 200 nm and 254 nm