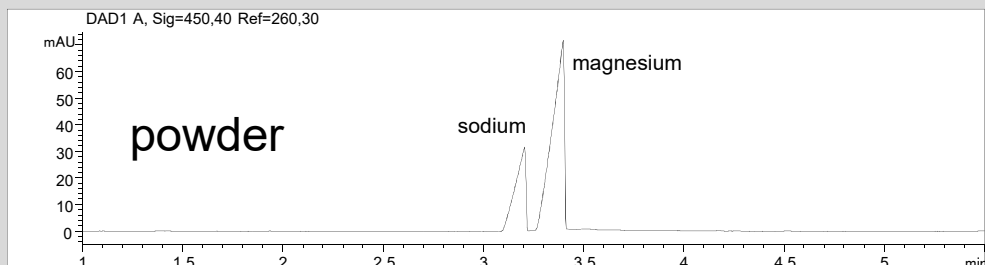
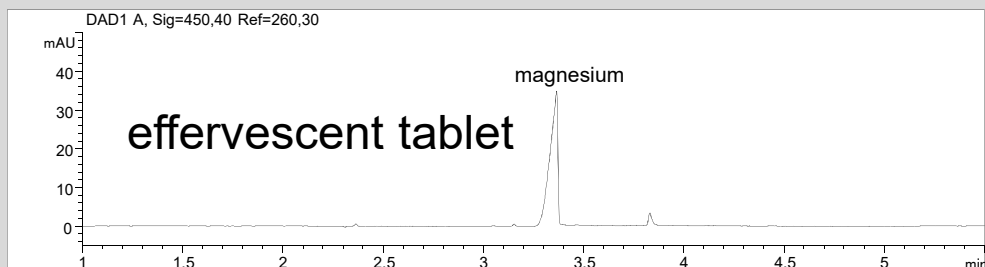


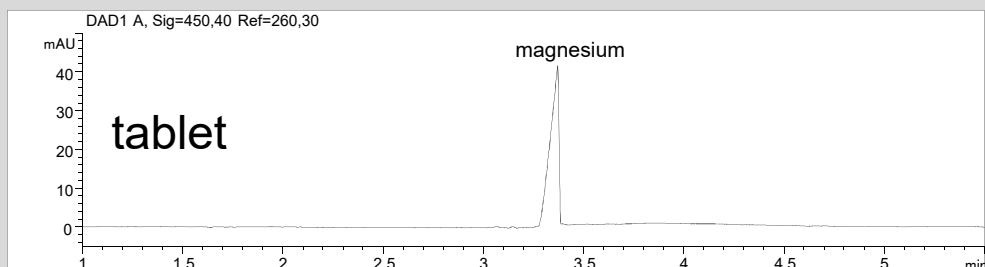
Determination of magnesium in food supplements



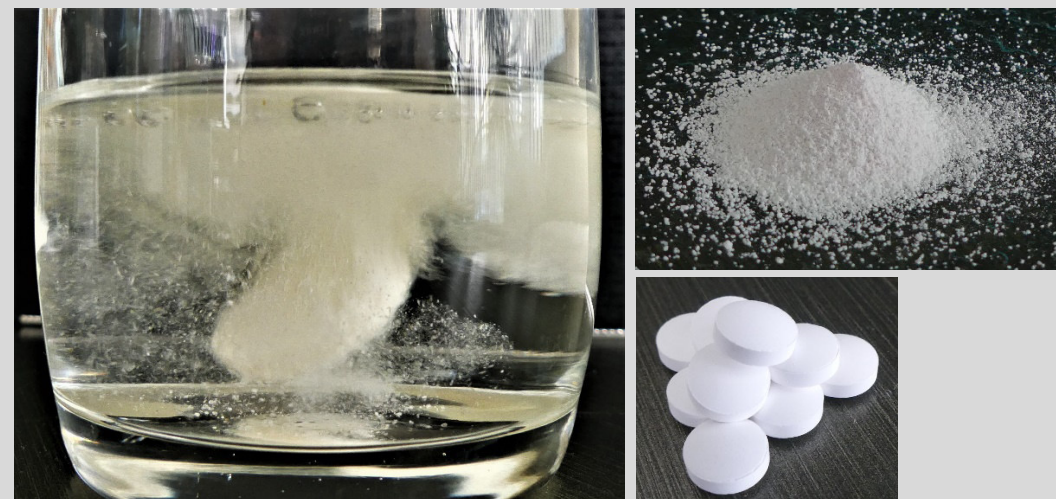
Sample preparation: 100 mg/20 ml, dilution 1:5



Sample preparation: 100 mg/20 ml, dilution 1:5



Sample preparation: 100 mg/20 ml, dilution 1:2



- Mode: CZE
- Electrolyte: aminopyridine
- Capillary: 50 μm ID, 64 cm total
- Separation: 30 kV, 25°C
- Injection: hydrodynamic, 50 mbar, 20 s
- Detection: indirect UV, 260 nm

Operator: C. Amoussou, Chr. Öffler, 07-2021