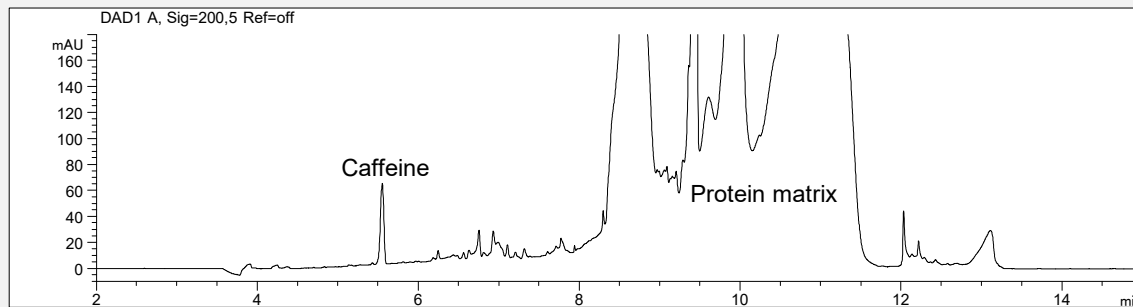
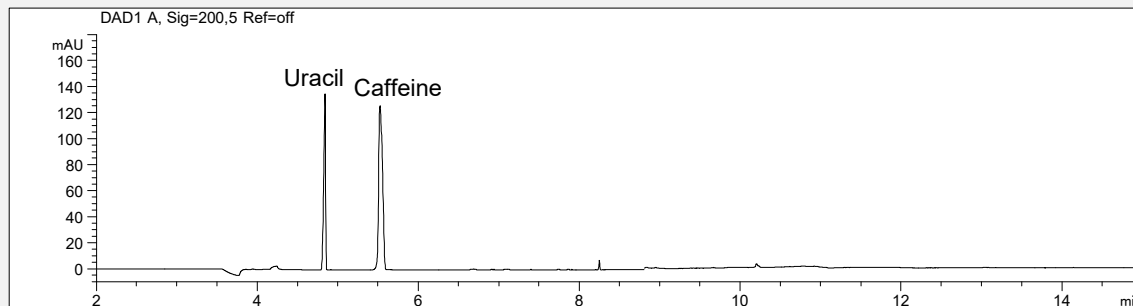


# Caffeine in protein food supplement

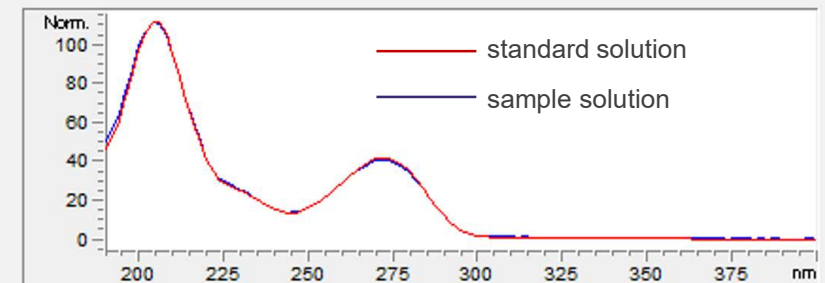
## a) Protein food supplement (10000 mg/l)



## b) Standard solution (50 mg/l Uracil, 60 mg/l Caffeine)



## c) Spectral data of Caffeine



- **Mode: MEKC**
- **Electrolyte: Borate-SDS**
- **Capillary: fused silica, 50  $\mu$ m I.D., 56 cm effective length**

- **Injection: 50 mbar, 20 s**
- **Detection: direct, sig: 200 nm**
- **Separation: 25°C, +30 kV.**