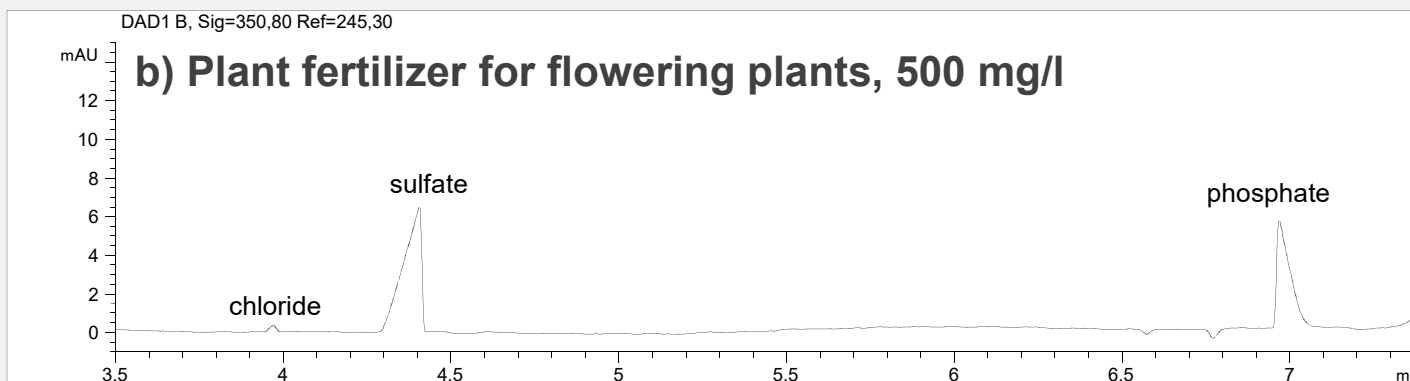
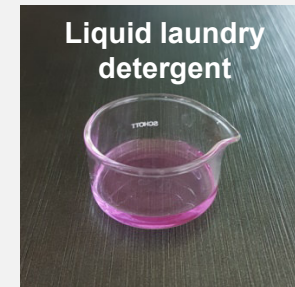
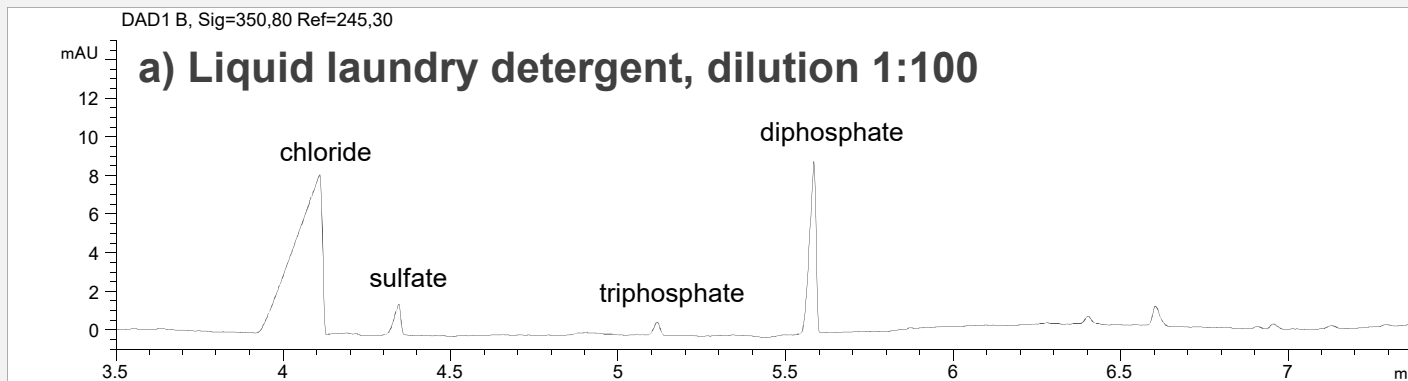


Phosphates and anions in different samples



- **Mode: CZE**
- **Electrolyte: Plating Bath Buffer (Agilent 5064-8236)**
- **Capillary: fused silica, 50 μ m I.D., 72 cm effective length (Agilent G1600-62211).**
- **Injection: 50 mbar, 30 s**
- **Detection: indirect, sig: 250,80 and ref: 245,30 nm**
- **Separation: 20°C, -30 kV.**