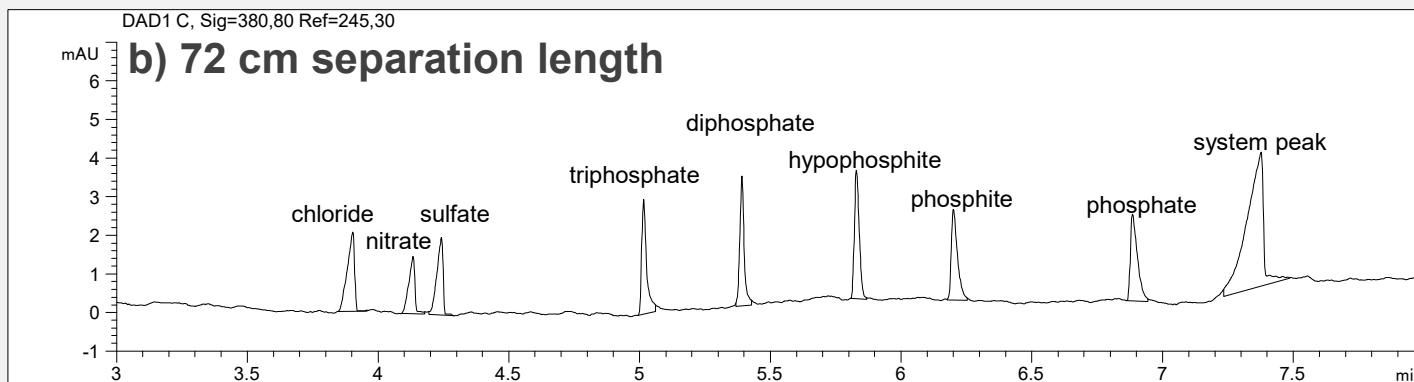
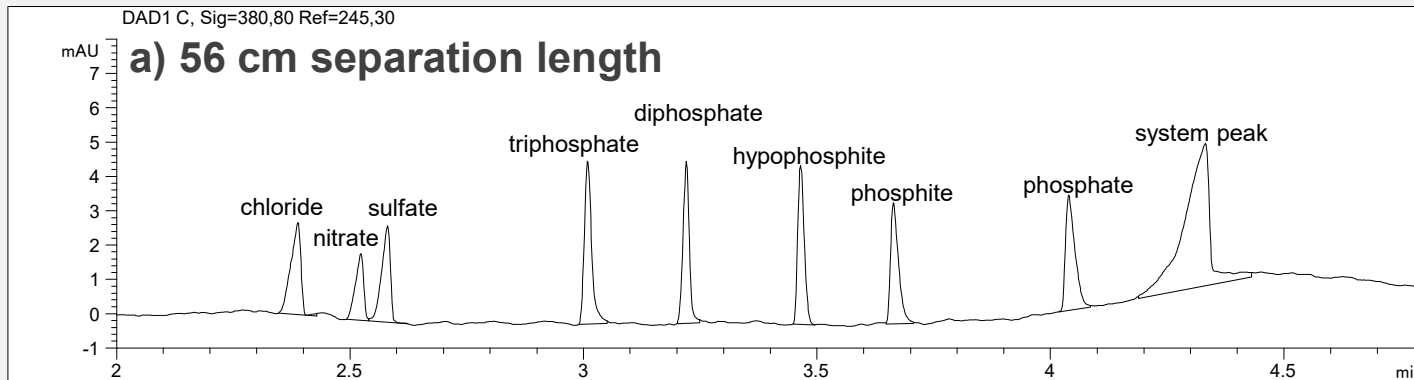


Phosphates and other phosphorous anions



- **Mode: CZE**
- **Electrolyte: Plating Bath Buffer (Agilent 5064-8236)**
- **Capillary: fused silica, 50 μ m I.D., 72 cm effective length (Agilent G1600-62211).**
- **Injection: 50 mbar, 30 s**
- **Detection: indirect, sig: 250,80 and ref: 245,30 nm**
- **Separation: 20°C, -30 kV.**

Composition of the standard mixture:
 10 mg/l: chloride, nitrate, sulfate, diphosphate, hypophosphite, and phosphate,
 20 mg/l: phosphite and
 30 mg/l: triphosphate.

Capillary length	Resolution nitrate/sulfate	Resolution phosphate/system peak
56 cm	1.63	4.24
72 cm	2.43	5.64