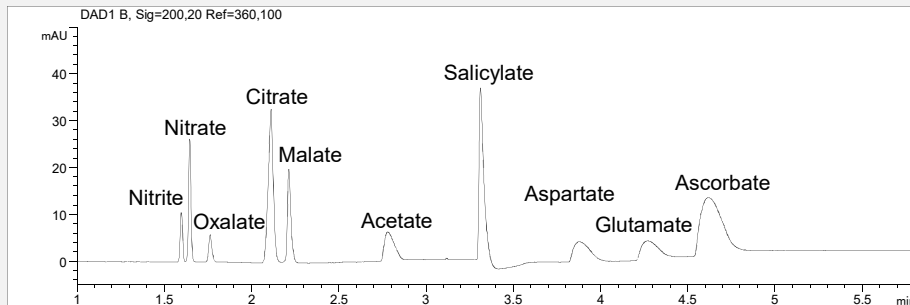
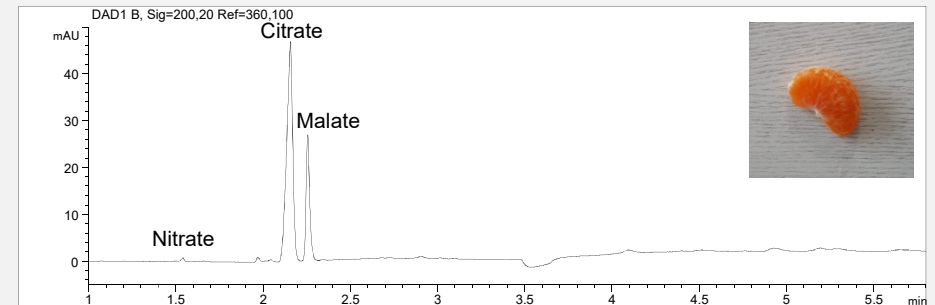


## Organic acids in fruits

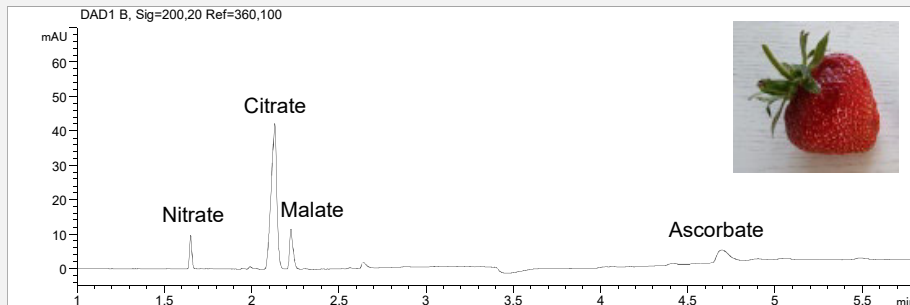
a) Standard solution: each 300 mg/l



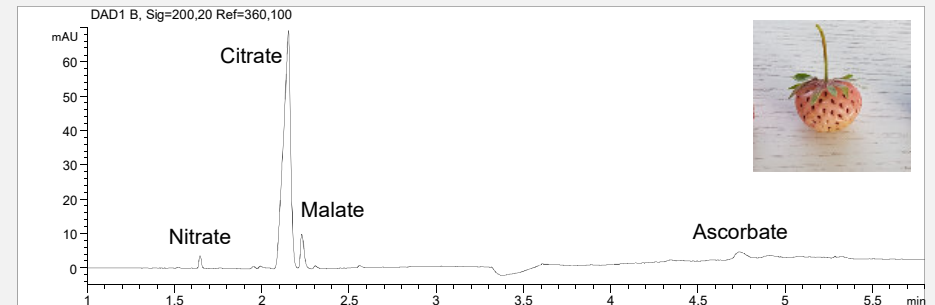
b) Tangerine



c) Strawberry: Christine



d) Strawberry: White pineapple



- **Mode: CZE**
- **Electrolyte: phosphate, pH 8.5**
- **Capillary: PVA, 50 µm I.D., bubble cell, 56 cm effective length, 64.5 cm total length**

- **Injection: 50 mbar, 15 s**
- **Detection: direct, 200 nm**
- **Separation: 25°C, -30 kV**