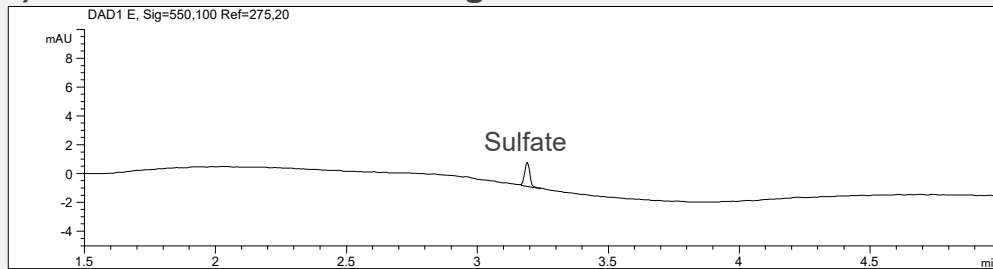


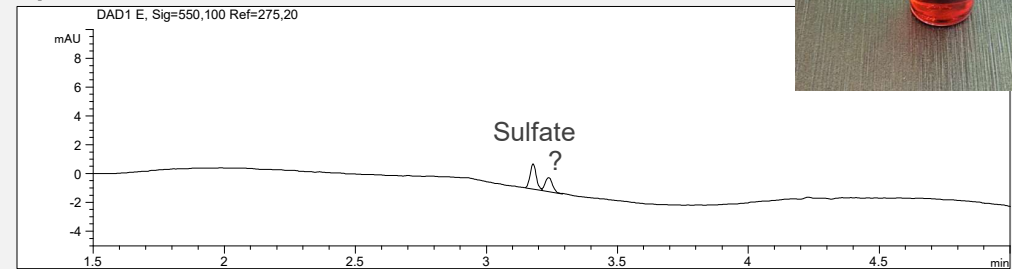
Sulfate in electroplating Chrome baths



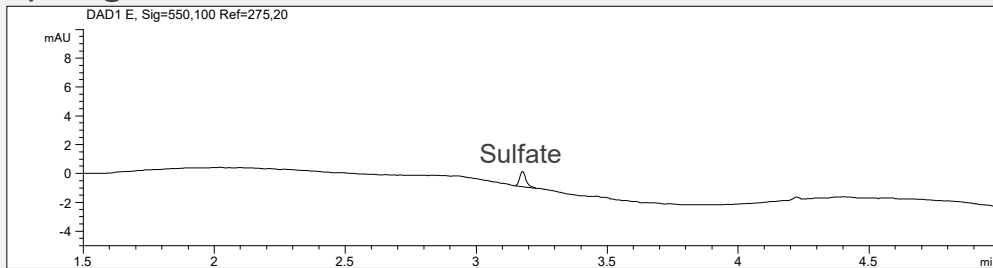
a) Standard solution: 10 mg/l Sulfate



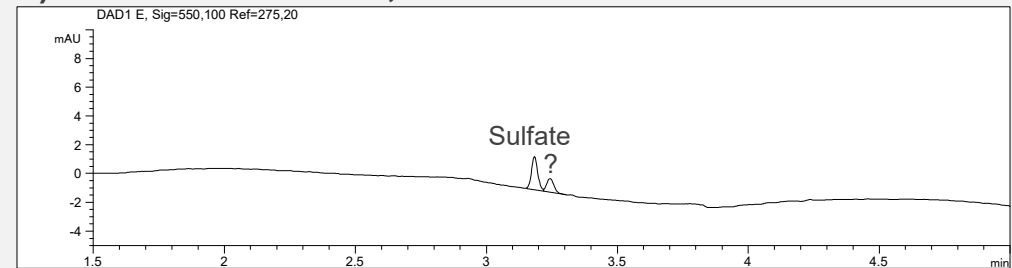
c) Hard Chrome Bath



b) Bright Chrome Bath



d) Hard Chrome Bath, addition of Sulfate



- Mode: CZE
- Electrolyte: laboratory made, pH 8
- Capillary: coated, 50 μm I.D., 56 cm effective length, 64.5 cm total length

- Injection: hydrodynamic: 50 mbar, 10 s
- Detection: indirect UV, 275 nm
- Separation: 25°C, -30 kV