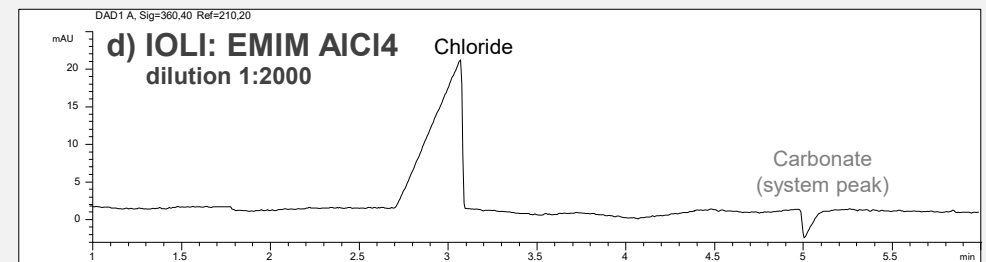
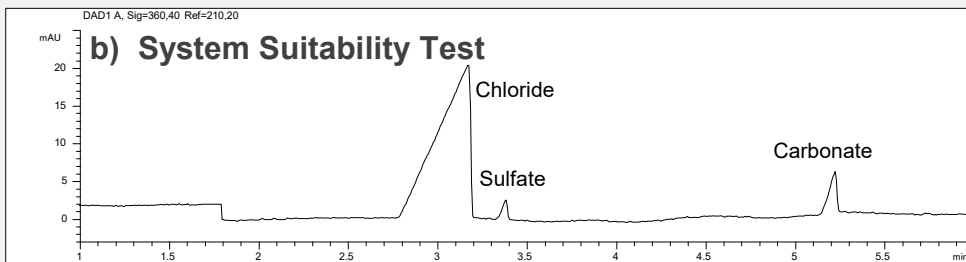
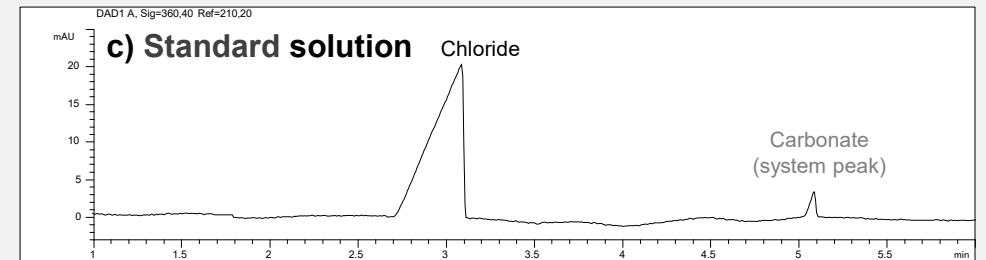
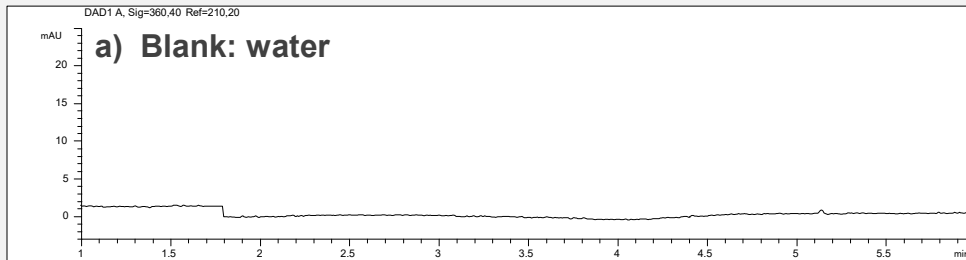
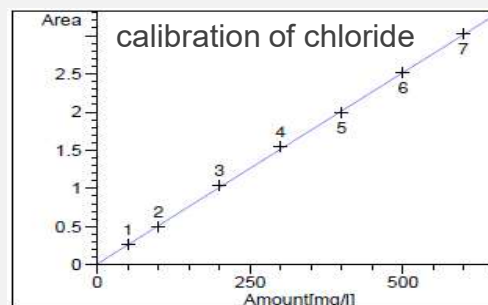


Quantification of the main component chloride in EMIM AlCl₄



- Mode: CZE
- Electrolyte: CE-Ai01
- Capillary: 50 µm ID, PVA, 64.5 cm
- Separation: -30 kV, 25°C
- Injection: pressure, 50 mbar, 10 s
- Detection: indirect UV, 210 nm



Calibration result:

Chloride: linear regression
Range: 50 – 600 mg/l $r^2 = 0.99985$