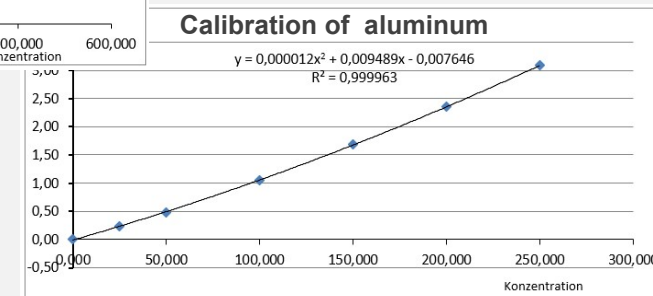
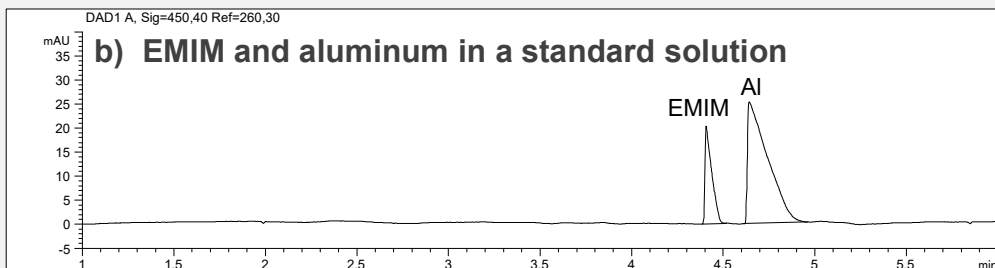
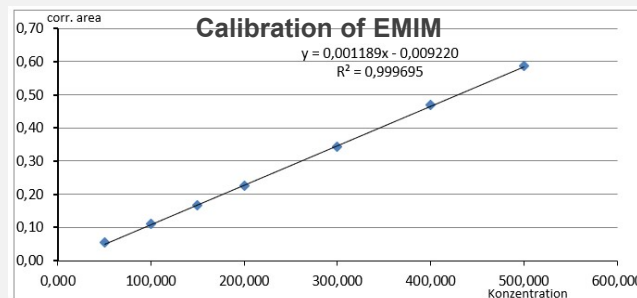
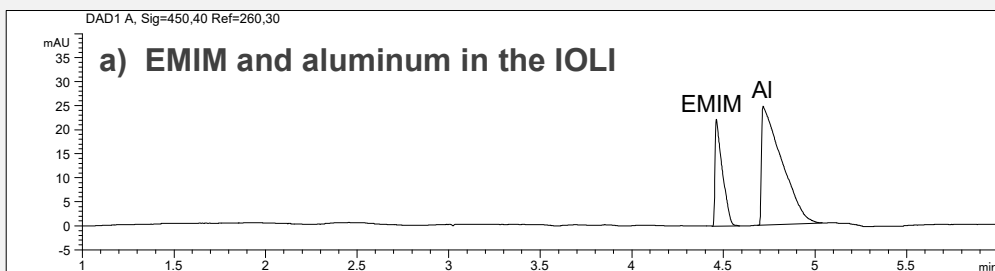


Quantification of the main components EMIM and aluminum in 1-Ethyl-3-methylimidazolium tetrachloroaluminate (EMIM AlCl₄)



- **Mode:** CZE
- **Electrolyte:** CE-Ki01
- **Capillary:** 50 µm ID, 64 cm
- **Separation:** +30 kV, 25°C
- **Injection:** pressure, 50 mbar, 15 sec
- **Detection:** indirect UV, 260 nm

Calibration results:

EMIM: linear regression
Range: 50 – 500 mg/l $r^2 = 0.999695$

Aluminium: quadratic regression
Range: 50 – 250 mg/l $r^2 = 0.999963$