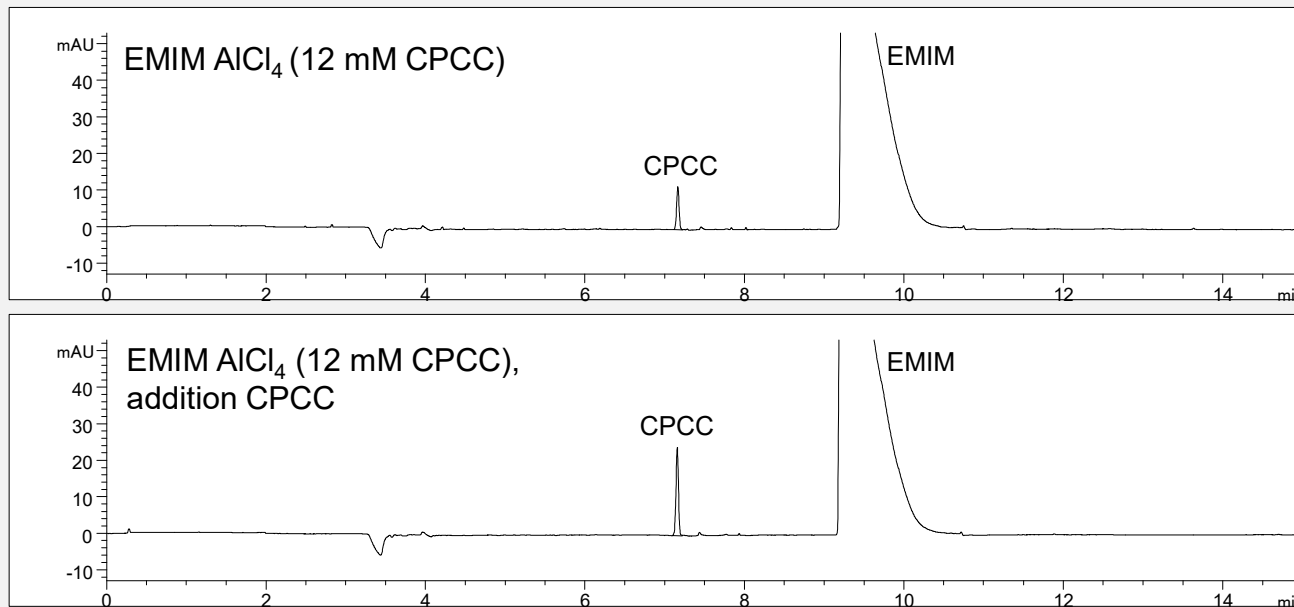


# Analysis of 2-Chloropyridine-3-carbonyl chloride (CPCC) in 1-Ethyl-3-methylimidazolium tetrachloroaluminate (EMIM AlCl<sub>4</sub>)



Limit of quantification (LOQ),  
S/N=10:

- CPCC standard: 0.01 mM
- CPCC in EMIM AlCl<sub>4</sub>: 1.0 mM

- **Mode:** MEKC
- **Electrolyte:** CE-Mz01
- **Capillary:** 50  $\mu$ m ID (bubble), 64 cm
- **Separation:** +30 kV, 25°C
- **Injection:** pressure, 50 mbar, 10 s
- **Detection:** indirect UV, 200 nm