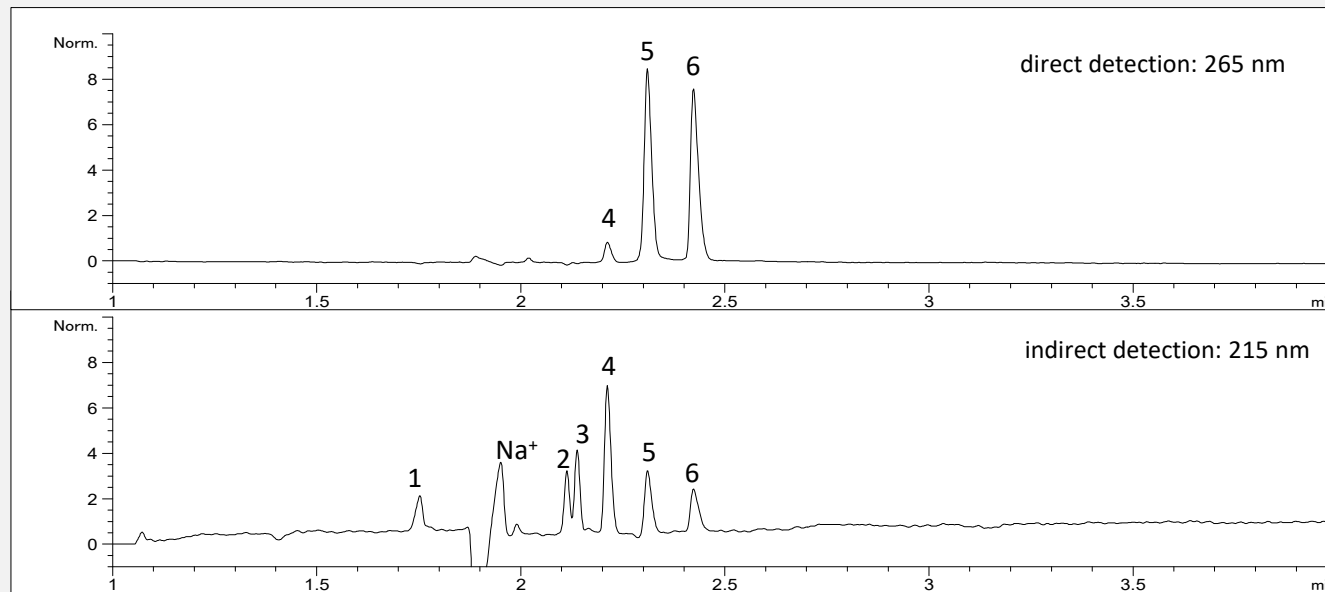


Determination of aliphatic mono-, di- and triamines as well as cyclic amines in acidic buffer with copper as chelating agent using simultaneous direct and indirect UV detection



- **Mode: CZE**
- **Electrolyte: phosphate, copper**
- **Capillary: 50 μ m ID, bubble cell, 64 cm**
- **Separation: +30 kV, 25°C**
- **Detection: direct UV: 265 nm (top), indirect: 215 nm (bottom)**